



INDIANA GROWN FOR SCHOOLS NEWSLETTER

Indiana's Statewide Farm to School Network

INTERESTED IN HOSTING OR ATTENDING A FUTURE FARM TO SCHOOL LISTENING SESSION?

The Indiana Grown for Schools Network's Listening Sessions gives stakeholders a space to discuss successes, challenges, and priorities for increasing local foods, fostering school gardens, and integrating nutrition and agriculture education in classrooms statewide.

For additional information about hosting or attending a session, please email Tashi Teuschler at Tashi@communitysolutions.net.

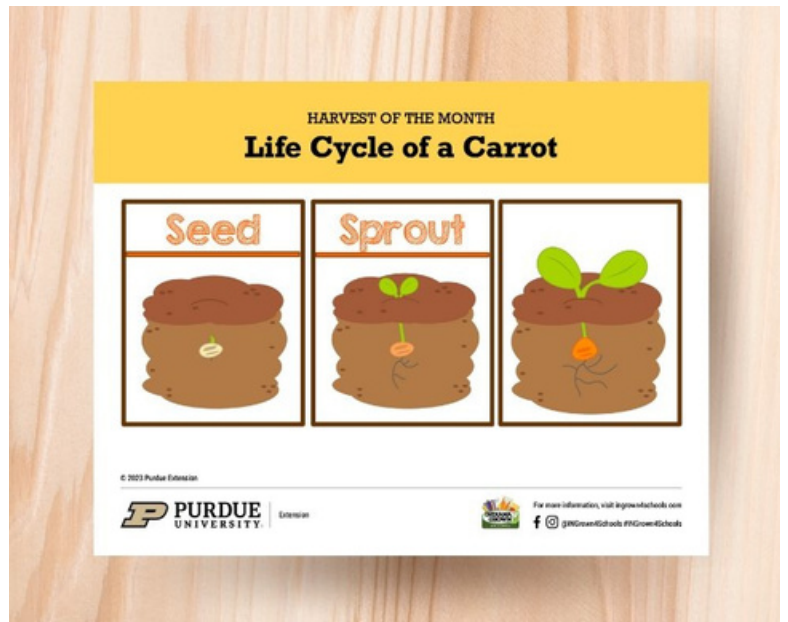
NEWS & RESOURCES



HARVEST OF THE MONTH DATABASE

The Indiana Harvest of the Month database provides you with access to classroom and cafeteria activities, lesson plans, videos highlighting Indiana producers, recipes, promotional material, and more! All classroom lessons have been aligned with Indiana Academic Standards for K-5 classrooms.

[LEARN MORE](#)



HARVEST OF THE MONTH 101 WEBINAR (RECORDING)

Harvest of the Month is a great opportunity to celebrate local abundance, experiment with new foods and recipes, and get some positive recognition for your school district and/or school. Are you interested in learning more? Check out the recording of the webinar by visiting the link below.

[LEARN MORE](#)





FARM TO ECE VISIONING TOOL

The Association for State Public Health Nutritionists (ASPHN) developed a Farm to ECE Envisioning Tool to make Farm to ECE planning easier. The tool, available for states and localities, uses the Spectrum of Opportunities framework and includes other factors such as partnerships and equity. Whether you are new to or are more seasoned in Farm to ECE, this tool can help you with your activities. For more information about this tool, email Emia Oppenheim at emia@asphn.org.

[LEARN MORE](#)

THE FOOD BUYING GUIDE

The Food Buying Guide (FBG) is the essential resource for food yield information for all child nutrition programs (CNP). The FBG assists CNP operators, food manufacturers, and other stakeholders with purchasing the correct quantity of foods and determining each food's contributions toward meal pattern requirements. Check out the new resources and additions to the FBG web-based tool.

[REGISTER HERE](#)

"I TRIED LOCAL ..." A TOOLKIT FOR ENGAGING KIDS WITH LOCAL FOOD & FARMS

"I Tried Local ..." is designed for use in early care and education (ECE) through second grade, and gives educators tools to connect kids with how food is grown and the farmers in their communities who grow it. The toolkit is divided into 10 units focused on crops growing locally in North Carolina, and each unit includes an overview of the crop, lesson plan, "Meet Your Farmer" video, recipe, coloring page, book recommendation, and discussion prompts. It also offers resources for implementing the core elements of farm to school – gardens, classroom cooking and taste tests, farm field trips and farmer visits, and local foods in meals or snacks. It can be used on its own or as a companion piece to the Growing Minds Farm to Preschool Toolkit.

[DOWNLOAD HERE](#)

LEVERAGING CACFP FOR FARM TO EARLY CARE AND EDUCATION: GROWING WINS ACROSS EARLY CHILDHOOD AND FOOD SYSTEM SECTORS

This new report from the Food Research & Action Center provides recommendations and policy changes that support childcare providers to access the federal Child and Adult Food Care Program (CACFP) and utilize it for eligible Farm to Early Care and Education (Farm to ECE) activities. Increased access to and use of CACFP and Farm to ECE activities is a pivotal cross-sector approach to improving children's equitable access to fresh, nutritious foods to reduce hunger. Download the report here.

[DOWNLOAD REPORT HERE](#)

UPCOMING EVENTS



FARM TO SCHOOL OFFICE HOURS

MARCH 20, 3:30-4:30 P.M. EST

The Indiana Grown for Schools Network invites you to join us for March's farm to school office hours on Wednesday, March 20 from 3:30-4:30 p.m. EDT.

What: Join Farm to School Coordinators from the Indiana Grown for Schools Network and other farm to school and ECE stakeholders each month to discuss and find answers to your questions related to local foods and making farm to school successful in your community.

Who: Anyone with questions related to farm to school and farm to ECE. All are welcome: farmers, school nutrition professionals, ECE providers, parents, teachers, distributors, gardeners, local public health professionals, extension educators, and other farm to school and ECE advocates.

When: We will host farm to school office hours on the third Wednesday of each month from 3:30-4:30 PM ET. If these times don't work for you, you can [submit your questions here](#).

[REGISTER HERE](#)

INDIANA GROWN SYMPOSIUM

MARCH 19, 9 A.M.-4:30 P.M. EST

Registration is underway for the 2024 Indiana Grown Symposium, at the Hendricks County Fairgrounds in Danville. The event gives food-based operators and new agritourism operators the opportunity to connect with resources available on-site to enhance their businesses. The Indiana Grown Symposium will feature a tradeshow that day from 7:30 a.m. to 5 p.m., as well as educational sessions, presentations, and networking opportunities.

[REGISTER HERE](#)



SQUARE FOOT GARDENING WITH KIDS

MARCH 19, 3 P.M. EST

Square foot gardening is an easier alternative to traditional row gardening and is perfectly suited for a school or ECE. It requires less digging, less weeding, and a bigger harvest per square foot of space. Join a Master Gardener in NH to learn more, as a part of the NH Farm to School and the NH School & Youth Garden networks webinar series.

[REGISTER HERE](#)

FARM TO SCHOOL TOOLKIT TRAINING BY GROWING MINDS

MARCH 20, 3:30 P.M. EST

CACFP Week is a national educational and information campaign sponsored annually by the National CACFP Sponsors Association designed to raise awareness of how the USDA's Child and Adult Care Food Program works to combat hunger.

[REGISTER HERE](#)

FARM TO SCHOOL LISTENING SESSION

APRIL 3, 3-4 P.M. EST

Join the Indiana Grown for Schools Network's Virtual Listening Session to discuss successes, challenges, and priorities for increasing local foods, fostering school gardens, and integrating nutrition and agriculture education in classrooms in your community and statewide.

WHO SHOULD ATTEND:

School administrators, educators, school food service personnel, local farmers, food distributors, students, parents, local council members, non-profit organizations, government officials, and community members.

For additional information about the session, please contact Tashi Teuschler at Tashi@communitysolutionsinc.net.

[REGISTER HERE](#)

FUNDING OPPORTUNITIES



SPECIALTY CROP BLOCK GRANT **DEADLINE: MARCH 22**

The Specialty Crop Block Grant (SCBG) program helps the Indiana State Department of Agriculture to enhance the competitiveness of specialty crops throughout the state of Indiana by:

1. Leveraging efforts to market and promote specialty crops;
2. Assisting producers with research and development relevant to specialty crops;
3. Expanding availability and access to specialty crops; and,
4. Addressing local, regional, and national challenges among specialty crop producers.

Eligible Projects

Specialty Crop Block Grant Program projects must enhance the competitiveness of specialty crops in the state of Indiana to be eligible. Applicants must be able to demonstrate that the proposed project will benefit the specialty crop industry and/or the public as a whole. Projects that benefit a single entity, organization, or individual are not eligible.

Eligible Applicants

For-profit entities (including sole proprietors), nonprofit entities, local units of government (e.g., towns, cities, counties), and both public and private institutions of higher education (IHEs) may apply for the SCBGP. Individuals acting on their own are not eligible to apply.

Application Resources:

- [ISDA SCBG Notice of Funding Opportunity 2024](#)
- [Indiana SCBG Application Instructions 2024](#)
- [2023 SCGB Webinar](#)
- [2023 SCGB Webinar Slides](#)
- [Definition of a Specialty Crop](#)

[**LEARN MORE & APPLY**](#)

BEGINNING FARMER & RANCHER DEVELOPMENT PROGRAM

DEADLINE: APRIL 4

The Beginning Farmer and Rancher Development Program supports projects that provide education, outreach, and technical assistance for beginning farmers and ranchers in the United States and its territories. This program provides opportunities for beginning farmers and ranchers to enter and/or improve their success in farming, ranching, and management of non-industrial private forest lands, and provides beginning farmers and ranchers the knowledge, skills, and tools needed to make informed decisions for their operations and enhance their sustainability.

[LEARN MORE & APPLY](#)

INDIANA ASSOCIATION OF PUBLIC EDUCATION FOUNDATION'S FOOD INSECURITY GRANT

DEADLINE: APRIL 12

This program is made possible through a collaboration with Indiana's architecture, engineering, and construction industry for a one-of-a-kind grant opportunity to combat food insecurity for children and families in Indiana's public schools. Funds are intended to support member district food pantries and food insecurity needs. These needs may range from facility construction, backpack programs, stocking goods, and more. Grant recipients will receive a minimum of \$2,000.

[LEARN MORE & APPLY](#)

LAKE MICHIGAN SCHOOL FOOD SYSTEM INNOVATION HUB AWARDS

DEADLINE: APRIL 30

SPARK AWARDS

Spark Awards fund projects that need a short-term infusion of funds for the school food system and marketplace improvements, such as capacity-building, planning, and product testing projects.

Award Range: \$10,000-\$75,000

INNOVATION COLLABORATIVE AWARDS

Innovation Collaborative Awards fund projects that promote systems-level change in the school food system and marketplace, such as scaling up of programs, forming regional partnerships, or integrating a new program or product development and integration.

Award: \$250,000

[LEARN MORE & APPLY](#)

STAY IN TOUCH!



#INGROWN4SCHOOLS

CONTACT INFORMATION

BRIANNA GOODE

 bgoode@health.in.gov

SOPHIE LINDLEY

 slindley@doe.in.gov

WEBSITE

www.ingrown4schools.com

ON ALL SOCIAL MEDIA

@ingrown4schools